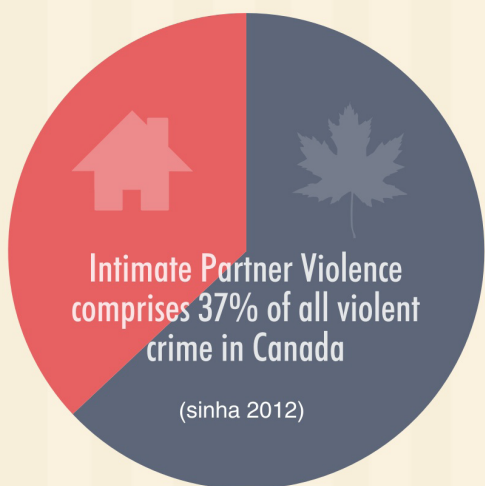


# Impacts and Costs of Exposure to Intimate Partner Violence for CHILDREN & YOUTH



*"Children living in homes with domestic violence are often exposed to this violence."*



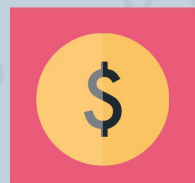
## Children, Youth and Intimate Partner Violence

*"Exposure to Intimate Partner Violence (IPV) is a form of child maltreatment. Negative impacts of IPV exposure are at least as detrimental as those of child abuse."*



## KEY AREAS OF INQUIRY

## COSTS of IPV EXPOSURE



\$759 Million Dollars every year



125,000 New Exposures each year

## EFFECTS of IPV EXPOSURE



Far-reaching Effects

Consequences of IPV exposure are far-reaching and felt widely in society



Long-lasting Effects

Children exposed to IPV are at significant risk for lifelong negative outcomes



Cascading Effects

Impacts of IPV exposure influence each other in multiple and interconnected ways



Social Sciences and Humanities Research Council of Canada

Conseil de recherches en sciences humaines du Canada

Canada

